



# Beaufort County Public Works Stormwater Infrastructure Project Summary

**Project Summary:** Trask Estate Outfall

**Activity:** Routine/Preventive Maintenance

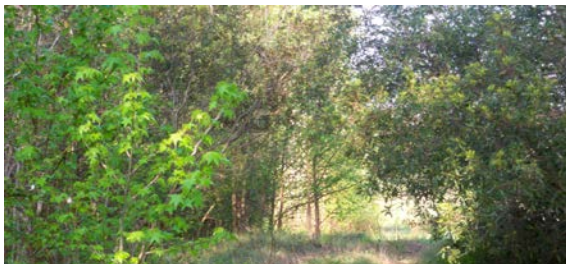
**Narrative Description of Project:**

**Completion:** Jun-13

Project improved 8,062 L.F. of drainage system. Shinn cut, reconstructed 1,070 L.F. of channel. Cleaned out 6,992 L.F. of channel. Installed (3) access pipes, (2) crossline pipes, (7) bleeder pipes, (2) access gates, rip rap and hydroseeded for erosion control. Jetted (1) crossline pipe and (1) access pipe.

2013-679 / Trask Estate Outfall	Labor Hours	Labor Cost	Equipment Cost	Material Cost	Contractor Cost	Indirect Labor	Total Cost
ASBUILT / Asbuilt - Project	4.0	\$160.92	\$16.08	\$3.00	\$0.00	\$135.84	\$315.84
AUDIT / Audit Project	2.0	\$41.78	\$0.00	\$0.00	\$0.00	\$26.46	\$68.24
BPINST / Bleeder pipe - Installed	82.0	\$1,818.56	\$682.09	\$685.21	\$0.00	\$714.28	\$3,900.14
CLPJT / Crossline Pipe - Jetted	6.0	\$141.96	\$88.64	\$30.04	\$0.00	\$97.88	\$358.52
HAUL / Hauling	89.5	\$1,968.71	\$957.65	\$810.91	\$0.00	\$1,303.35	\$5,040.62
HYDR / Hydroseeding	40.0	\$916.80	\$133.84	\$229.04	\$0.00	\$399.00	\$1,678.68
ODBH / Outfall ditch - bushhogged	20.0	\$437.00	\$484.14	\$121.26	\$0.00	\$288.40	\$1,330.80
ODCO / Outfall ditch - cleaned out	291.0	\$6,508.62	\$4,245.68	\$1,940.14	\$0.00	\$3,182.96	\$15,877.40
ODSHN / Outfall ditch - Shinn cut	92.0	\$2,048.20	\$839.52	\$338.95	\$0.00	\$996.54	\$4,223.21
OFPI / Outfall Pipe - Installation	97.0	\$2,304.74	\$409.12	\$2,707.95	\$0.00	\$1,135.62	\$6,557.43
ONJV / Onsite Job Visit	42.0	\$1,111.72	\$168.84	\$56.10	\$0.00	\$844.31	\$2,180.97
PI / Project Inspection	1.0	\$40.23	\$4.02	\$3.00	\$0.00	\$33.96	\$81.21
RRI / Rip Rap - Installed	16.0	\$366.72	\$49.13	\$62.85	\$0.00	\$159.60	\$638.30
RSDCL / Roadside Ditch - Cleanout	67.0	\$1,485.64	\$182.59	\$853.67	\$0.00	\$771.56	\$3,293.46
WGRB / Workshelf - Grubbed	30.0	\$666.90	\$564.50	\$107.23	\$0.00	\$321.20	\$1,659.83
WSL / Workshelf - Level	40.0	\$871.05	\$450.33	\$128.80	\$0.00	\$388.20	\$1,838.38
WSSHN / Workshelf - Shinn cut	125.0	\$2,801.65	\$1,630.49	\$1,278.27	\$0.00	\$1,445.40	\$7,155.81
<b>2013-679 / Trask Estate Outfall Sub Total</b>	<b>1,044.5</b>	<b>\$23,691.20</b>	<b>\$10,906.66</b>	<b>\$9,356.41</b>	<b>\$0.00</b>	<b>\$12,244.56</b>	<b>\$56,198.82</b>
<b>Grand Total</b>	<b>1,044.5</b>	<b>\$23,691.20</b>	<b>\$10,906.66</b>	<b>\$9,356.41</b>	<b>\$0.00</b>	<b>\$12,244.56</b>	<b>\$56,198.82</b>

Before



During





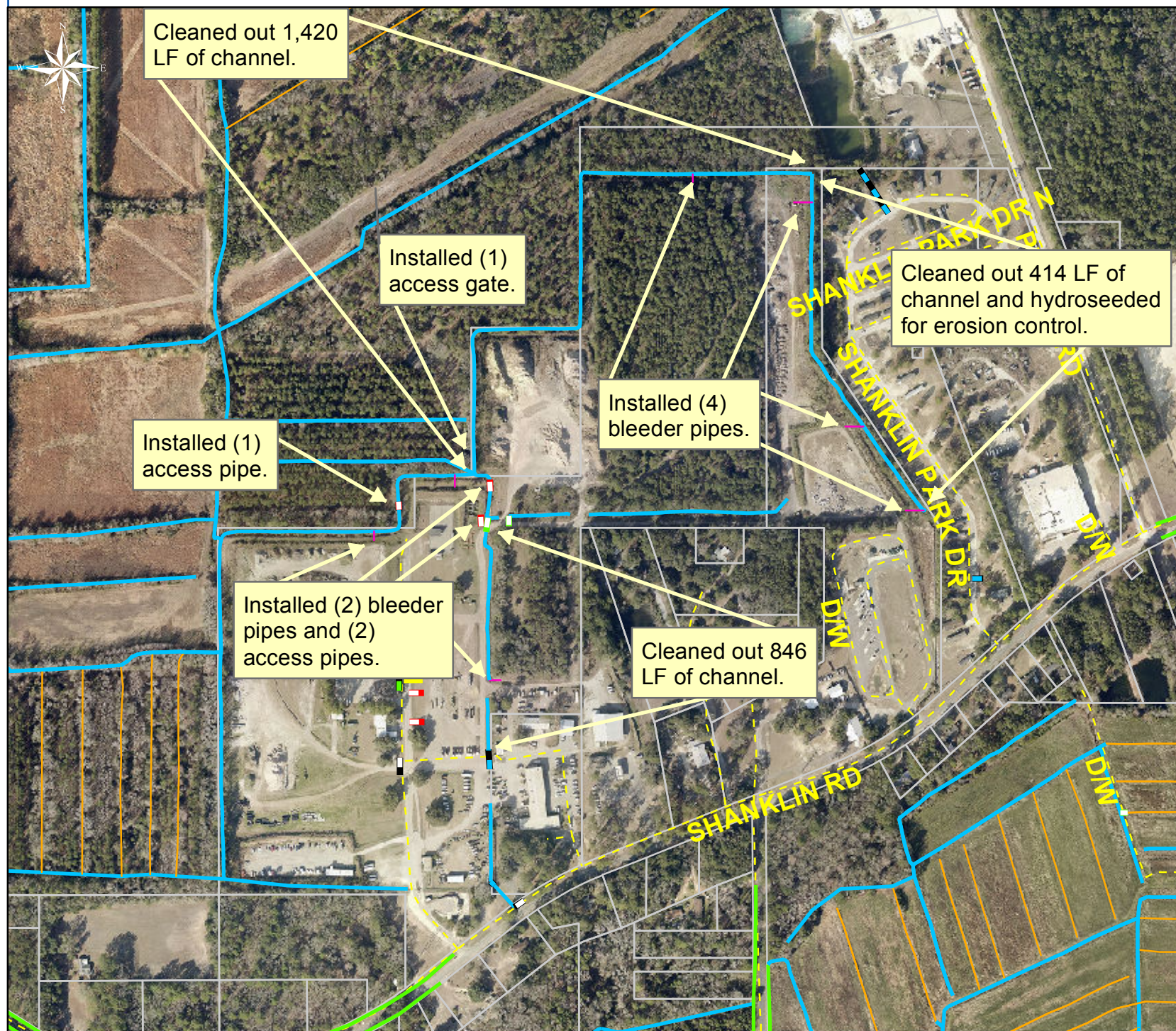
**Project: Trask Estate Outfall  
Map 1**

**Activity: Routine/  
Preventive  
Maintenance**

**Project #:  
2013-679**

**Township: Port  
Royal Island**

**Completed:  
June 2013**



**1 inch = 499 feet**



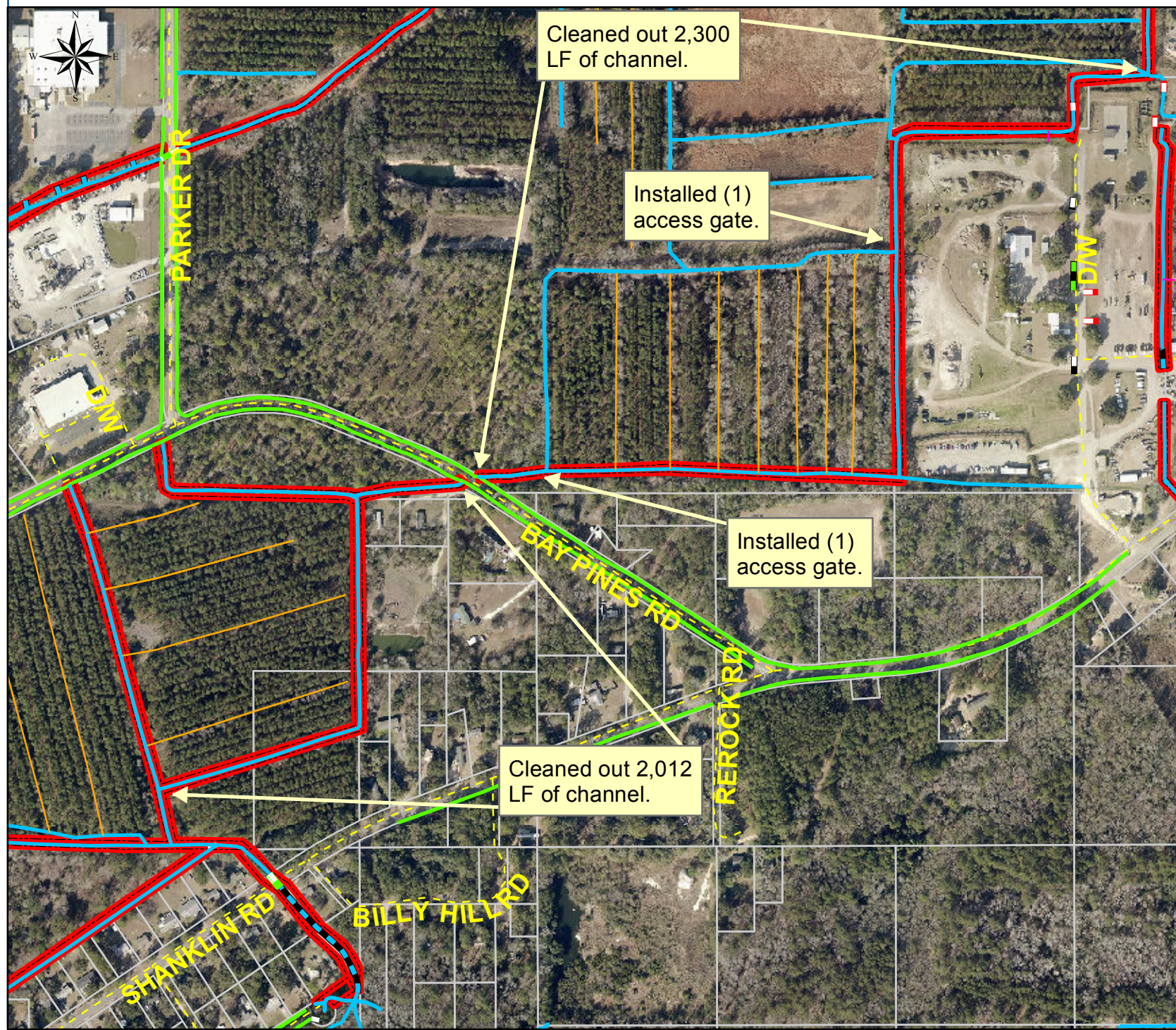
**Project: Trask Estate Outfall Map 2**

**Activity: Routine/ Preventive Maintenance**

**Project #: 2013-679**

**Township: Port Royal Island**

**Completed: June 2013**



**Legend**

**TYPE**

- River
- Creek/Stream
- River/Creek/Marsh BANK
- Channel (fka Outfall)
- Channel Pipe
- Lateral
- Lateral Pipe
- Roadside
- Roadside Pipe
- Road Pipe
- Crossline Pipe
- Driveway Pipe
- Access Pipe
- Bleeder Pipe
- Easements



1 inch = 499 feet



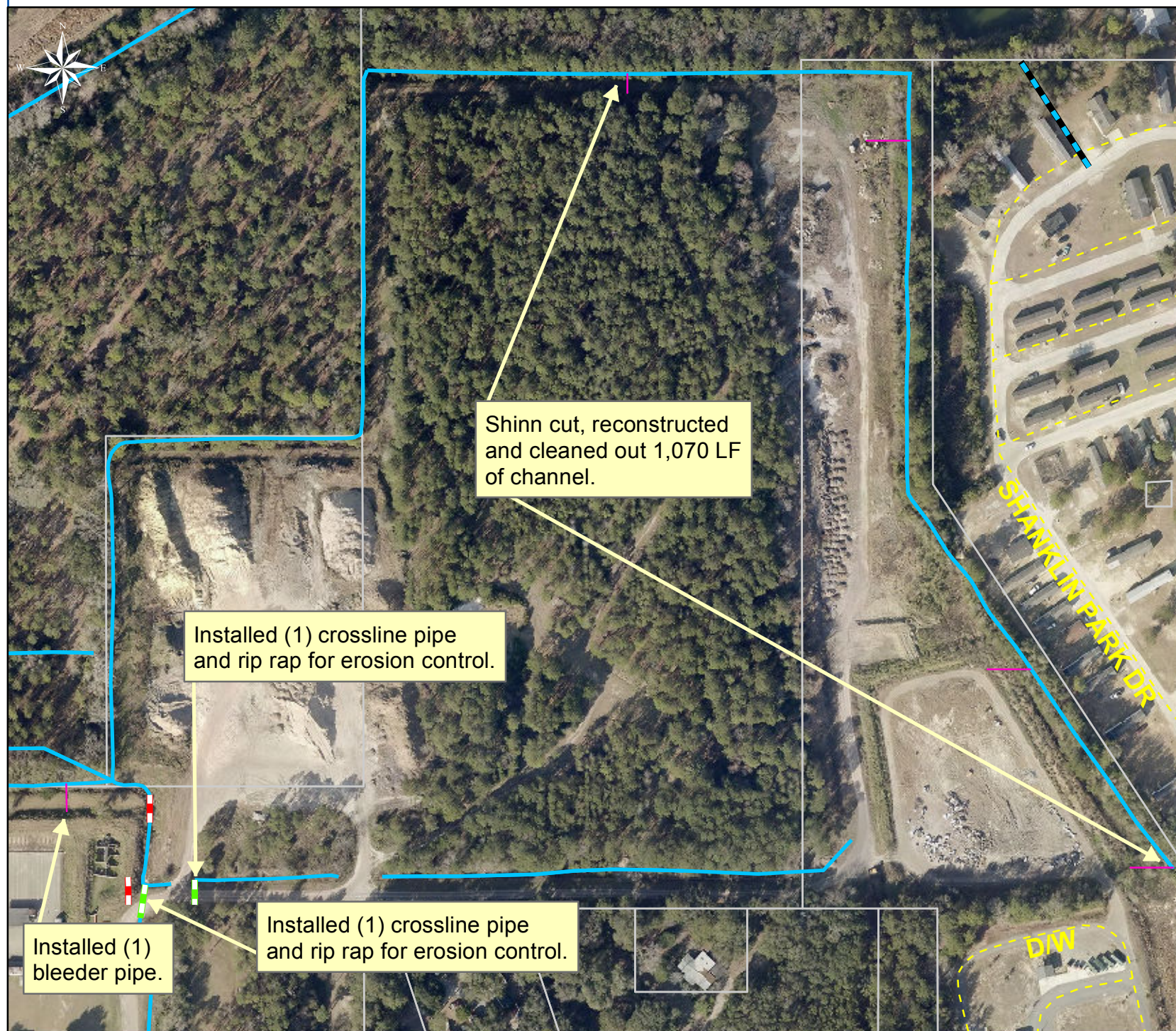
**Project: Trask Estate Outfall Map 3**

**Activity: Routine/ Preventive Maintenance**

**Project #: 2013-679**















**Township: Port Royal Island**

**Completed: June 2013**



**Legend**

**TYPE**

-  River
-  Creek/Stream
-  River/Creek/Marsh BANK
-  Channel (fka Outfall)
-  Channel Pipe
-  Lateral
-  Lateral Pipe
-  Roadside
-  Roadside Pipe
-  Road Pipe
-  Crossline Pipe
-  Driveway Pipe
-  Access Pipe
-  Bleeder Pipe



**1 inch = 212 feet**

Prepared By: BC Stormwater Management Utility

Date Print: 8/26/13

File: C:/sethdata/projects/projectmaps/Trask Est OF 2013-679 Map3



**Project: Trask Estate Outfall Map 4**

**Activity: Vacuum Truck**















**Project #: 2013-679**

**Township: Port Royal Island**

**Completed: June 2013**

**Legend**

**TYPE**

-  River
-  Creek/Stream
-  River/Creek/Marsh BANK
-  Channel (fka Outfall)
-  Channel Pipe
-  Lateral
-  Lateral Pipe
-  Roadside
-  Roadside Pipe
-  Road Pipe
-  Crossline Pipe
-  Driveway Pipe
-  Access Pipe
-  Bleeder Pipe



1 inch = 167 feet